

Holistic View of the Enterprise

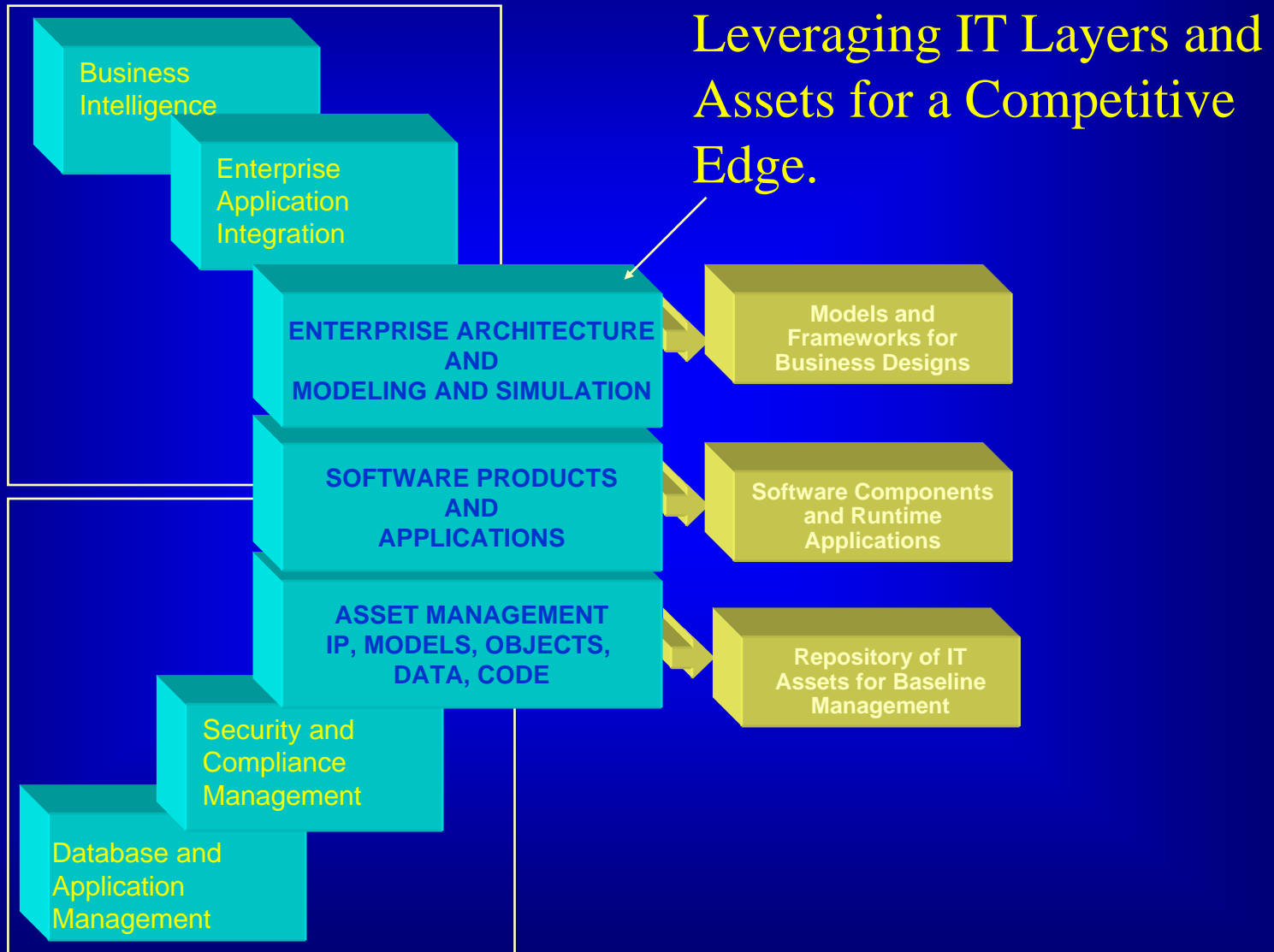


- Business Development
- Operations
- Finance
- Process Improvement

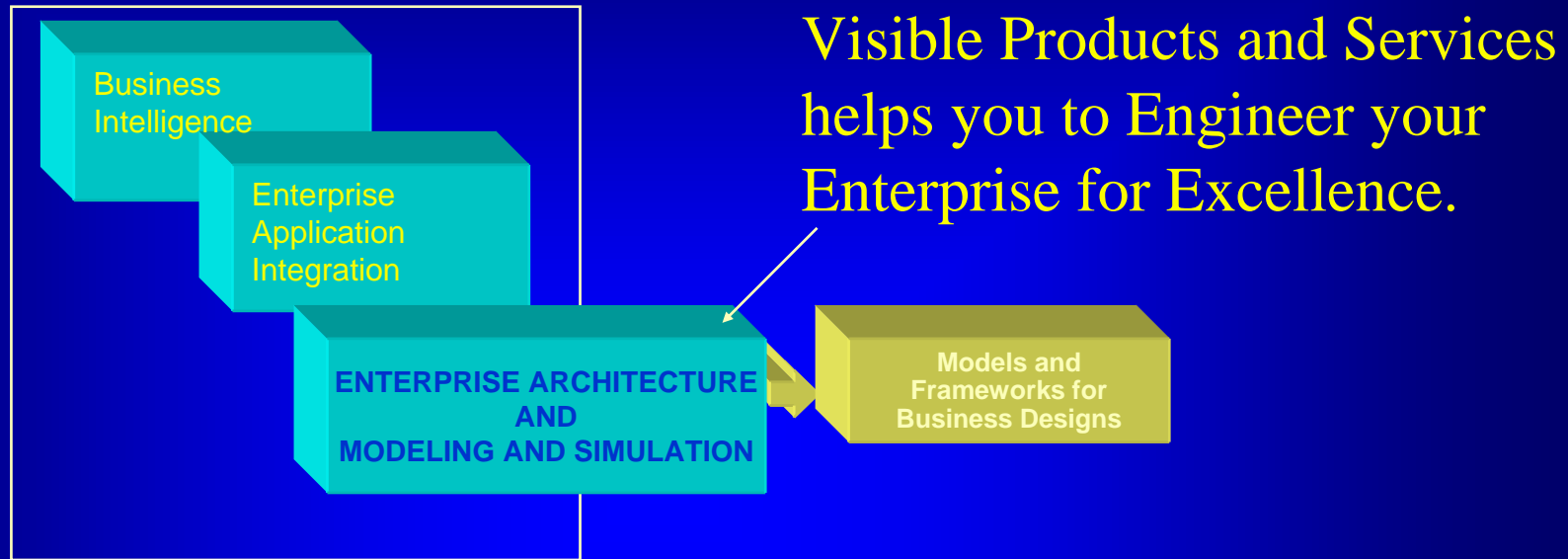
- Eliminate Gaps:
 - ◆ Strategy
 - ◆ Compliance
 - ◆ Financials
 - ◆ Security

- IT Architecture
- IT Infrastructure
- New Software Possibilities
- Application Integration

Enterprise Architecture and Model Driven Development



Visible Benefits

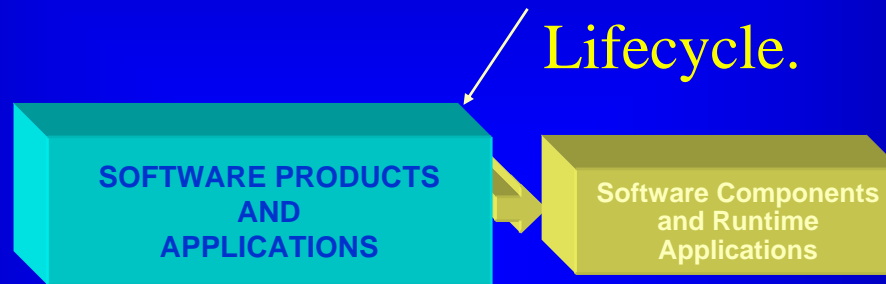


- **Benefits**

- ◆ Integration across Enterprise Strategy, Plans, and Resources
- ◆ Impact Analysis of Enterprise Strategy and Plans on Operational and Organizational Resources
- ◆ Lower Total Cost of Ownership for Enterprise Applications Life Cycle Costs

Visible Benefits

Leverage Visible Products and Services to control your Software Development Lifecycle.

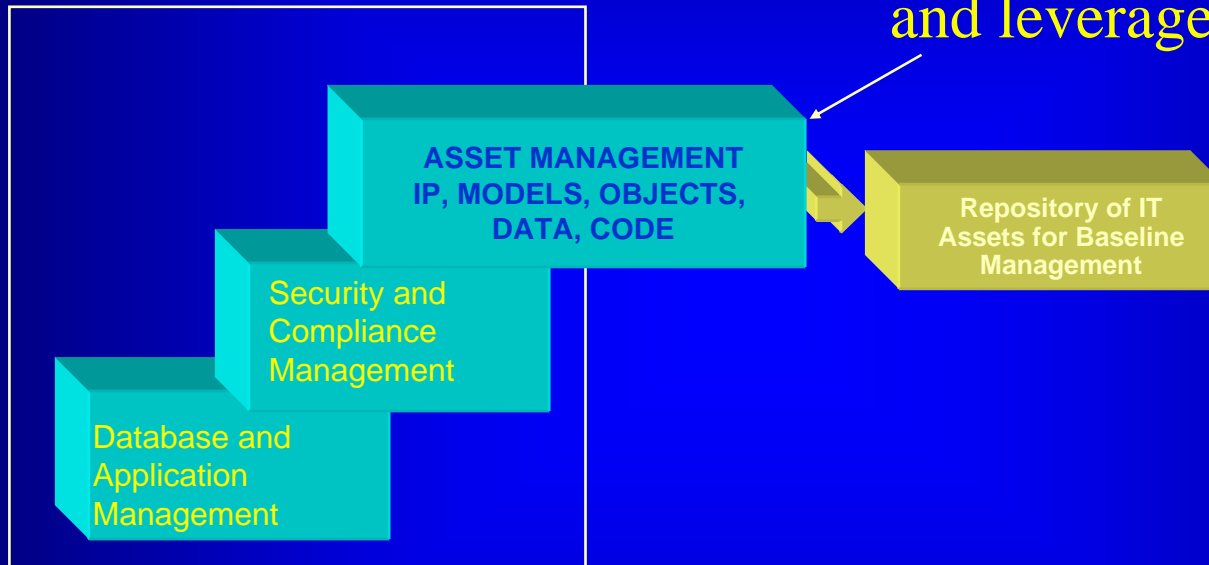


- **Benefits**

- ◆ Automatic Code Generation resulting in on time delivery and zero defect rates.
- ◆ Full Tracability from Requirements through Design and Development.
- ◆ Faster Software Development Lifecycle times thereby improving Time to Market and extending Time of Use.

Visible Benefits

Leverage Visible Products and Services to help you protect and leverage all your IT assets



- **Benefits**

- ◆ Reconfigure and reuse assets for new functionality
- ◆ Leverage and extend assets to new applications
- ◆ Secure assets from unauthorized use
- ◆ Comply with new auditing and control requirements

R&D Outsourcing Benefits

Visible Products and Services enhances R&D Focus and Technology Outsourcing.



- Differentiated Added Value

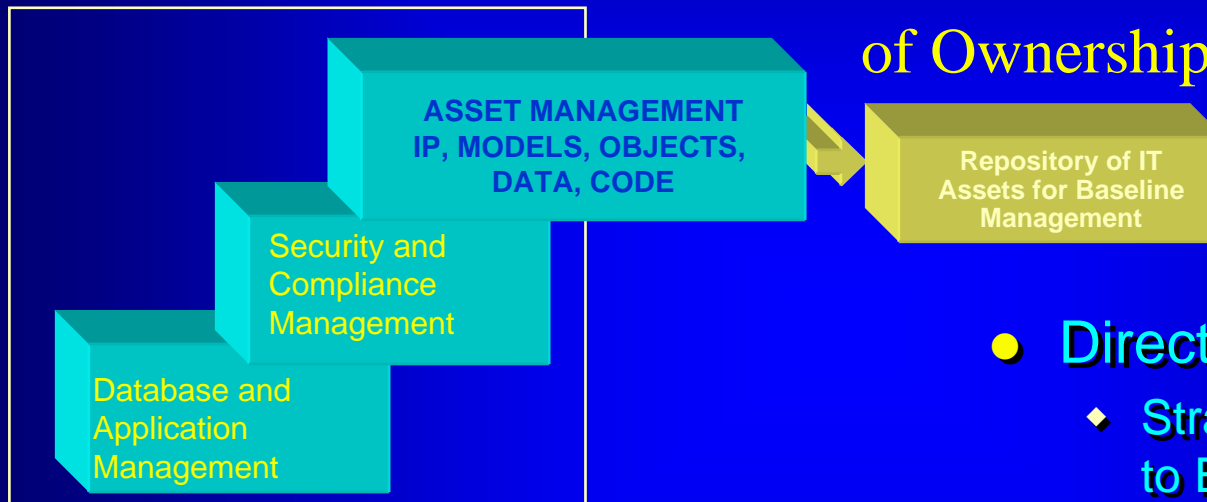
- ◆ Enterprise Solutions integrated through to code generation.
- ◆ Industry Templates
- ◆ Business Domain Knowledge
- ◆ Execution

- Direct Benefits

- ◆ Refocus R&D
- ◆ Cut Outsourcing Costs
- ◆ Cut Software Lifecycle Costs
- ◆ Cut IT Administrative Overhead Costs

Lower Total Cost of Ownership

Visible Products and Services enables selling based on Total Cost of Ownership



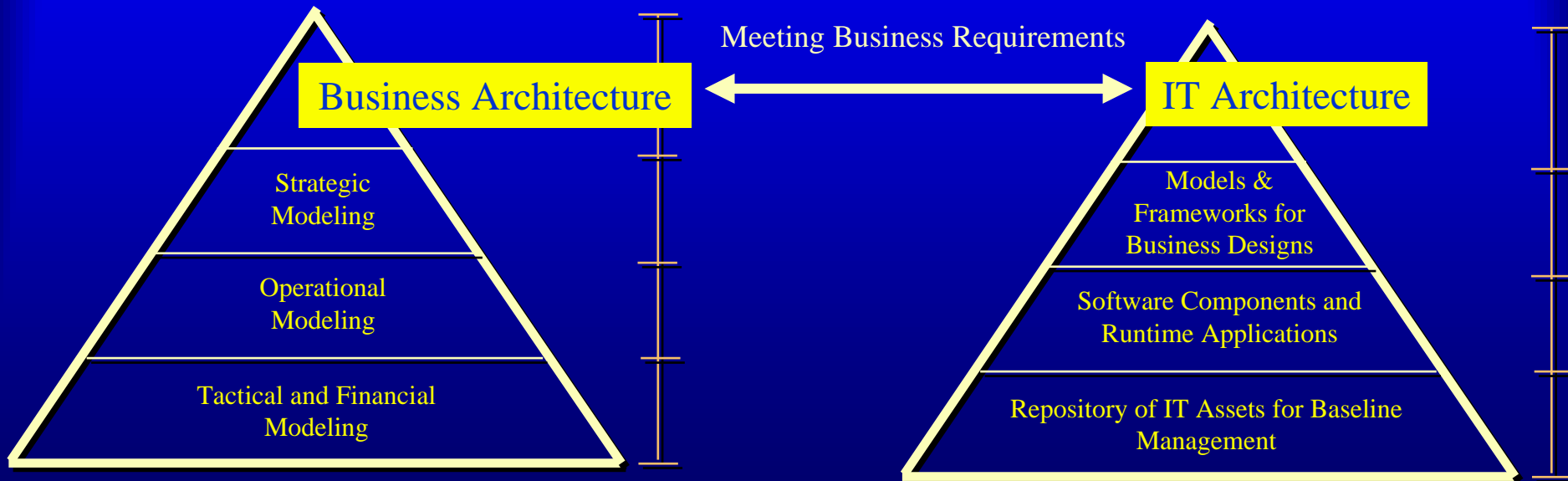
- Differentiated Value Added

- ◆ Enterprise View of IT Assets
- ◆ Enhanced Enterprise Security
- ◆ Strategic IT Assets Identified and Valued
- ◆ Reorients Business to the importance of protecting and leveraging IT & IP Assets.

- Direct Benefits

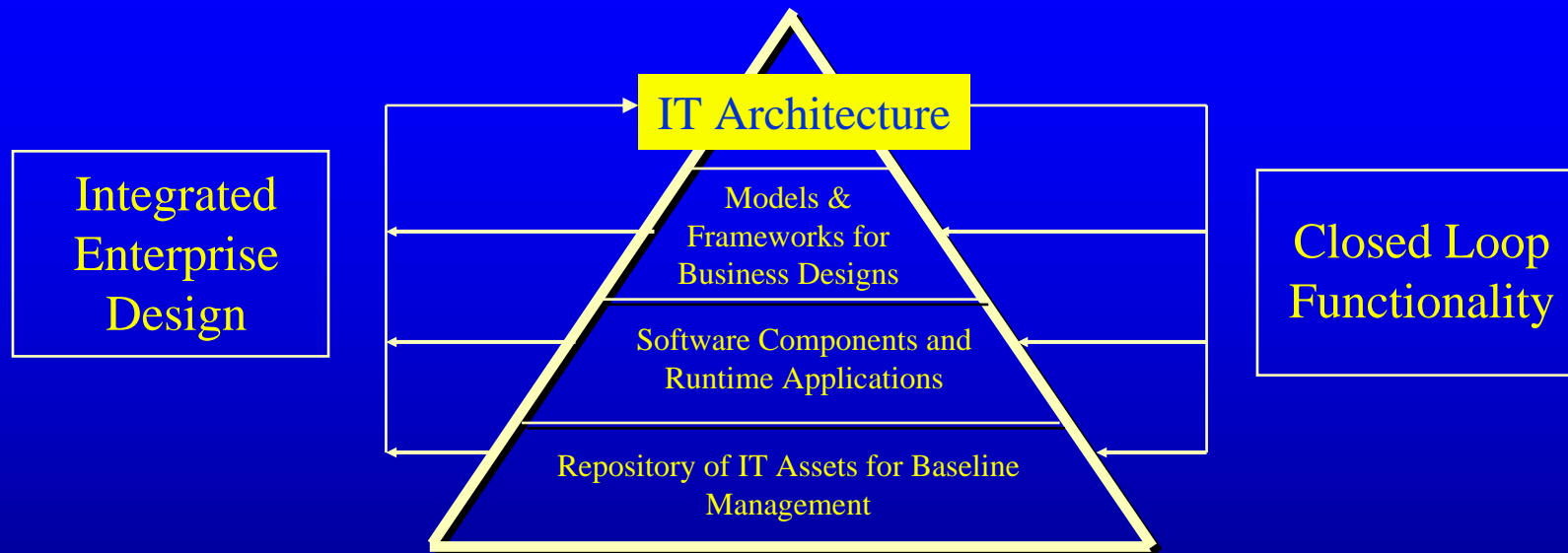
- ◆ Strategic Assets are linked to Enterprise Models
- ◆ Critical leverage points are managed
- ◆ Cut IT maintenance spending
- ◆ Cut data lifecycle costs
- ◆ Cut IT administrative overhead

Enterprise Architecture Management Implementation



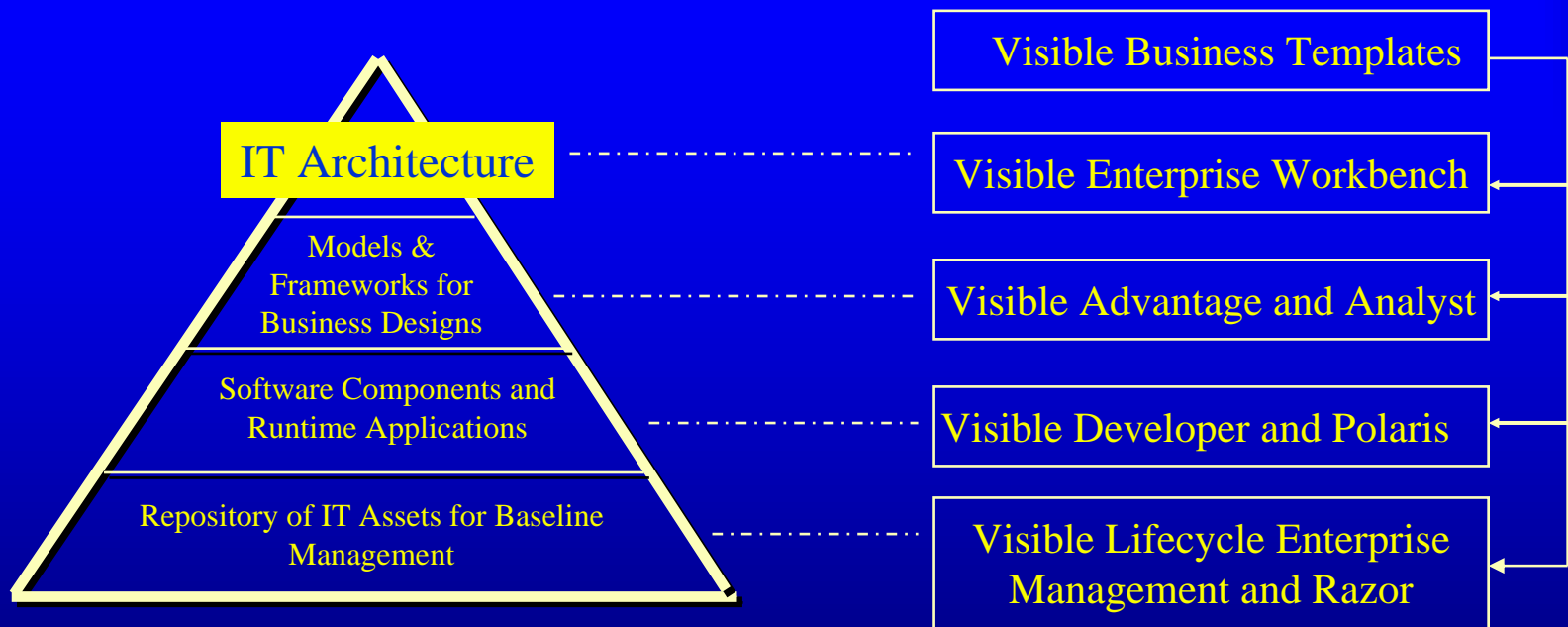
Enterprise Architecture Management Visible Continuum of Architecture

Ensures Cost Effectiveness

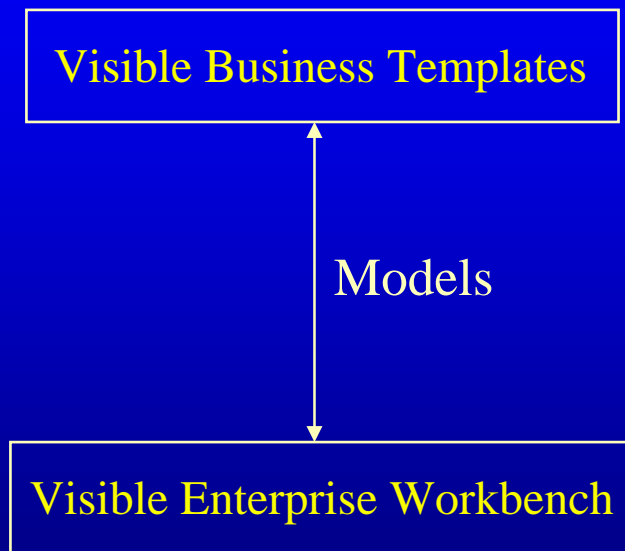
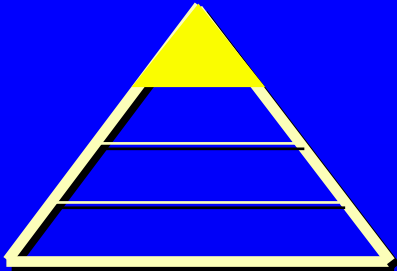


Enterprise Architecture Management Visible Integrated Product Suite

Ensures Step-by-Step ROI

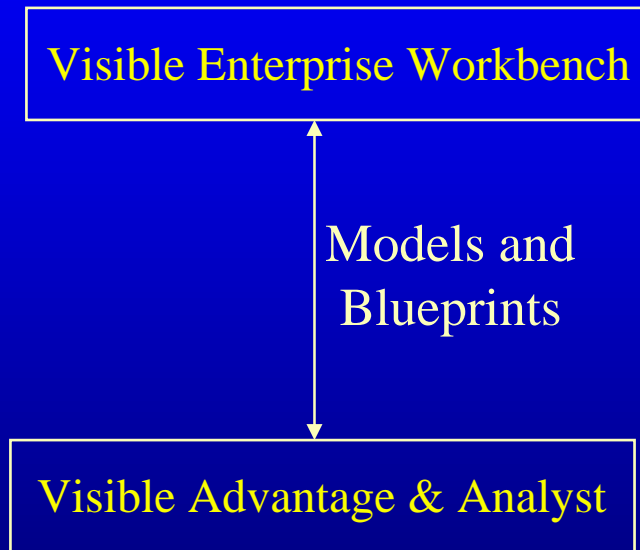
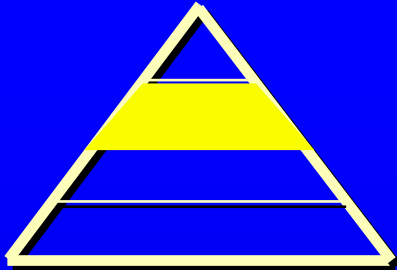


IT Architecture Implementation



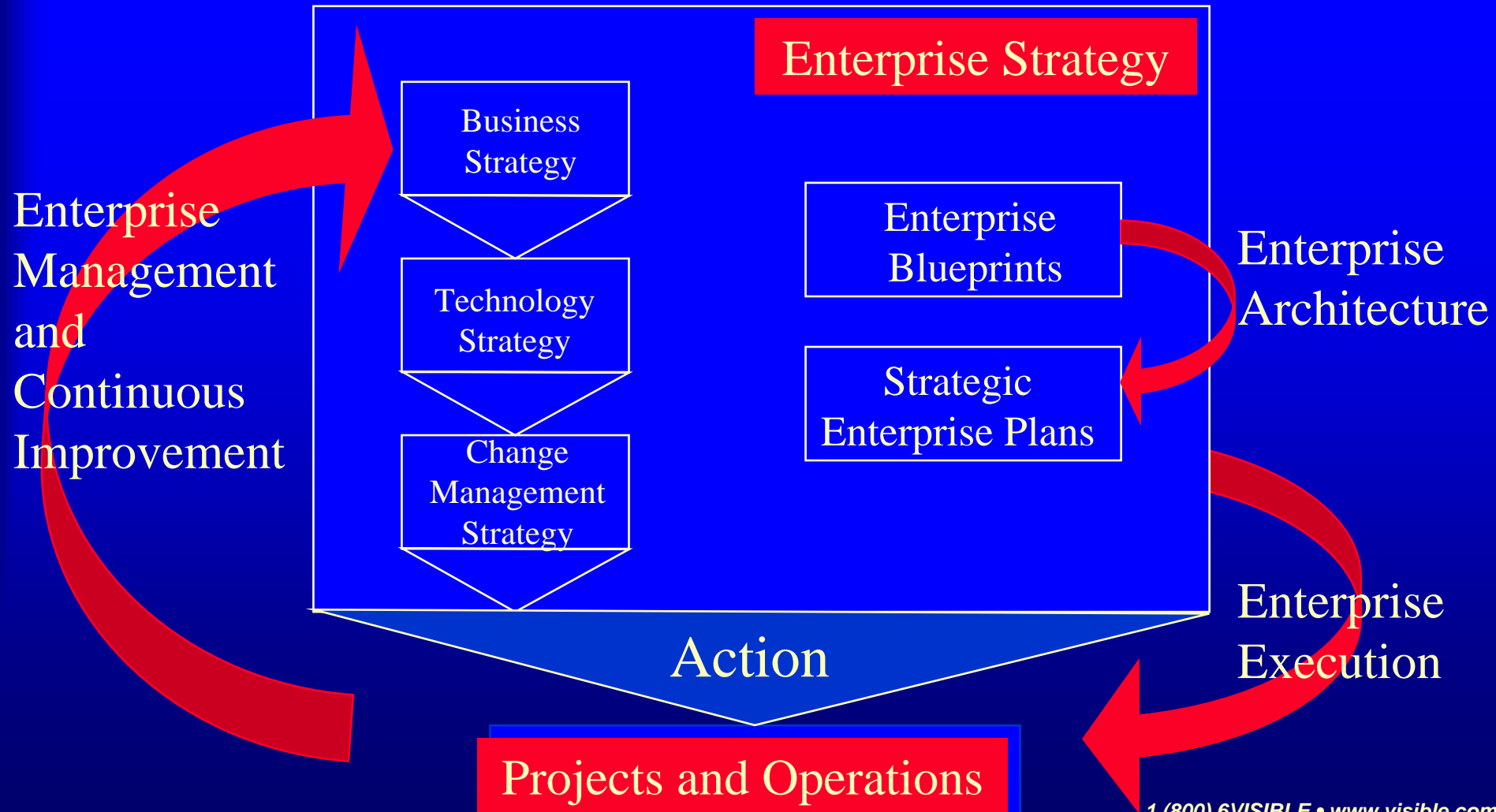
- Meeting Business Requirements
 - ◆ Business Plans
 - ◆ Performance Plans
 - ◆ Business Rules
 - ◆ Business Requirements
 - ◆ Requirements Impact Analysis
 - ◆ Process and Activity Analysis

Models and Frameworks Implementation

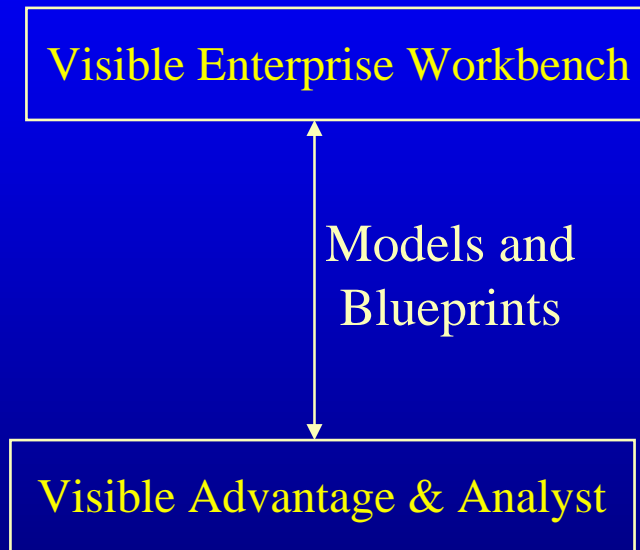
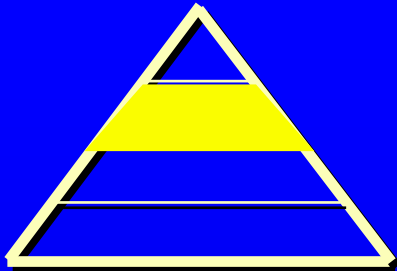


- Meeting Information Requirements
 - ◆ Process Models
 - ◆ Data Models
 - ◆ Class Models
 - ◆ Activity Models
 - ◆ Model Views and Locations
 - ◆ Enterprise Blueprints
 - ◆ Strategic Enterprise Plans

Models and Frameworks Implementation

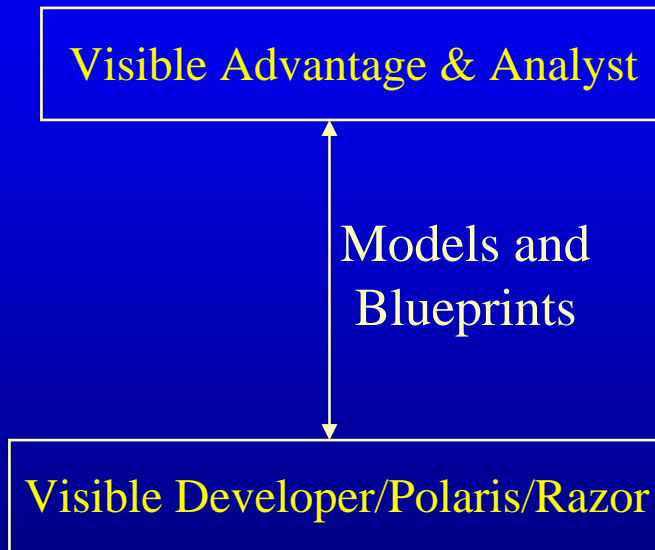
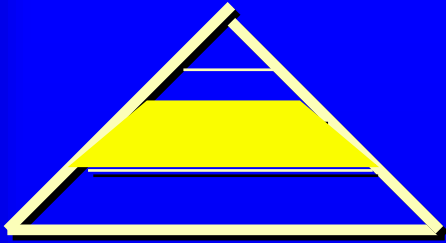


Models and Frameworks Implementation



- Elements Developed
 - ◆ Goals (Why)
 - ◆ Functions (How)
 - ◆ Data/Information (What)
 - ◆ Organizational Structure (Who)
 - ◆ Location/Network (Where)
 - ◆ Time/Events (When)
 - ◆ Relationships (How to)
- Enterprise Plans: Estimates for time, scope and costs

Software and Applications Implementation

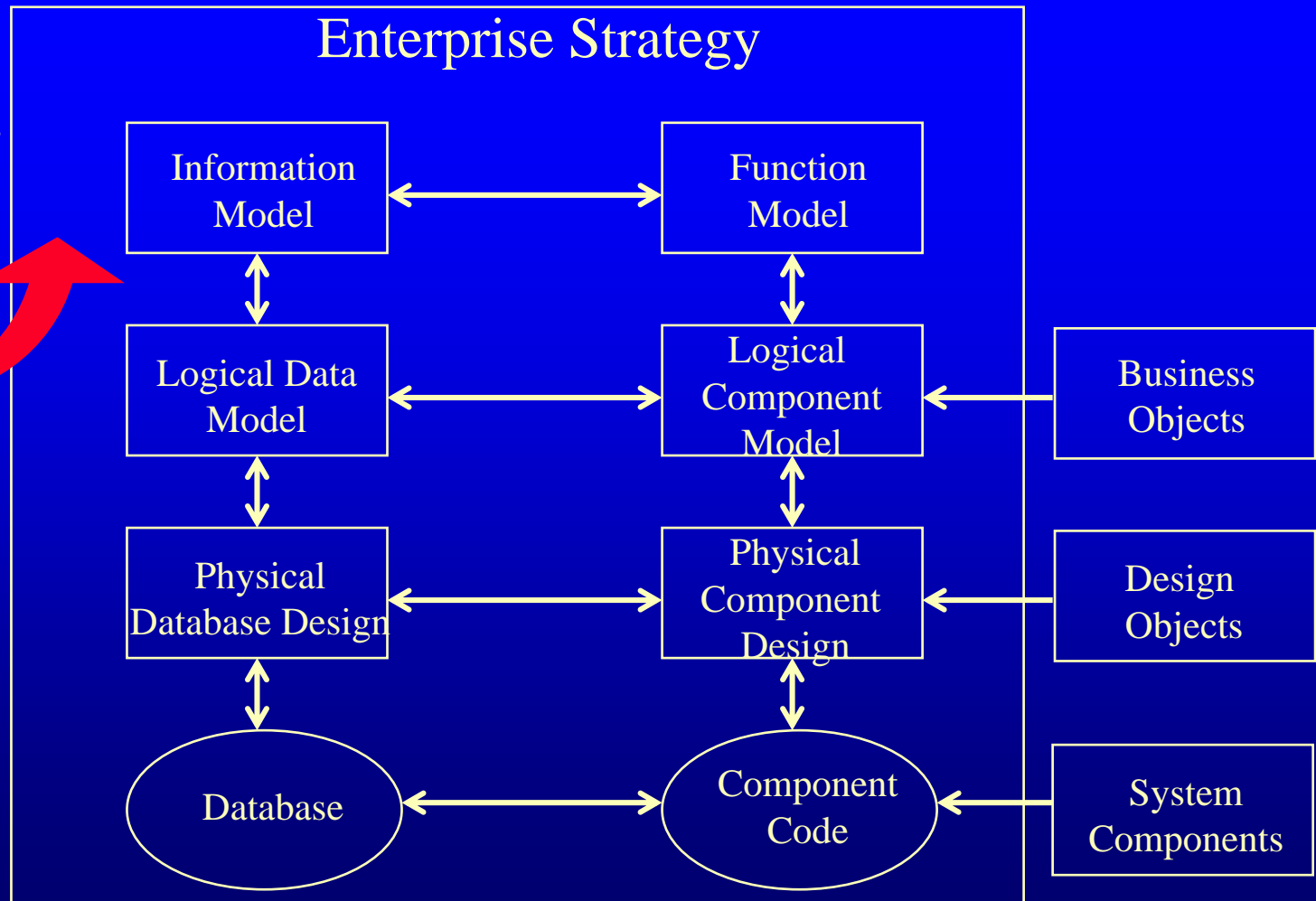


- Meeting Application Requirements

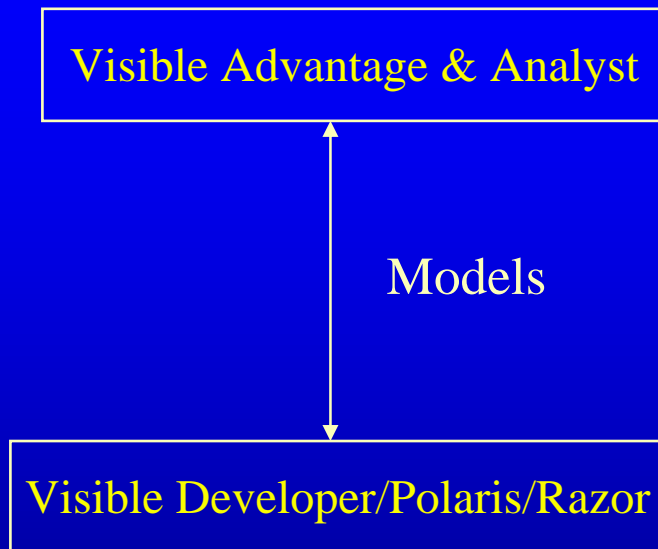
- ◆ Users' Requirements
- ◆ Infrastructure Design
- ◆ Application Design
- ◆ Data Base Design
- ◆ Hardware and Software Configuration
- ◆ Application Interfaces

Software and Applications Model Driven Architecture and Design

Business
Requirements
and Rules

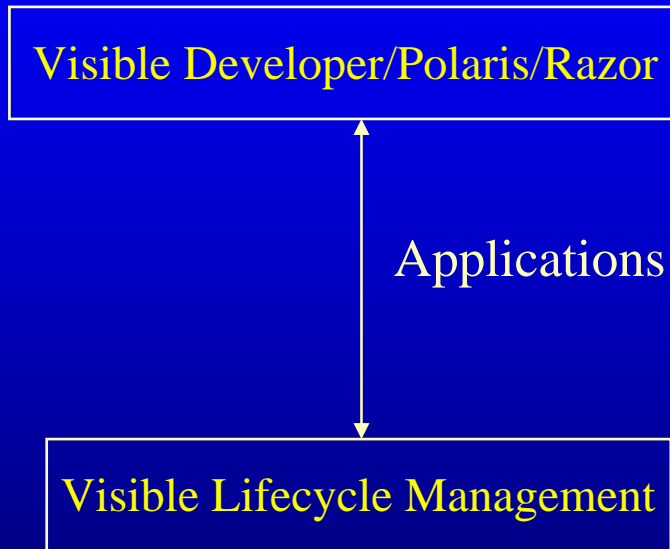
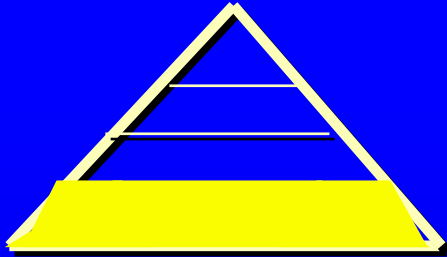


Software and Applications Model Driven Development



- **System Components**
 - ◆ System Application Design
 - ◆ Software Development
 - ◆ Software Integration
 - ◆ Database
 - ◆ Objects
- **Enterprise Integration**
 - ◆ Automated Code Generation
 - ◆ Access Commercially available software and service
 - ◆ Process and code tracability

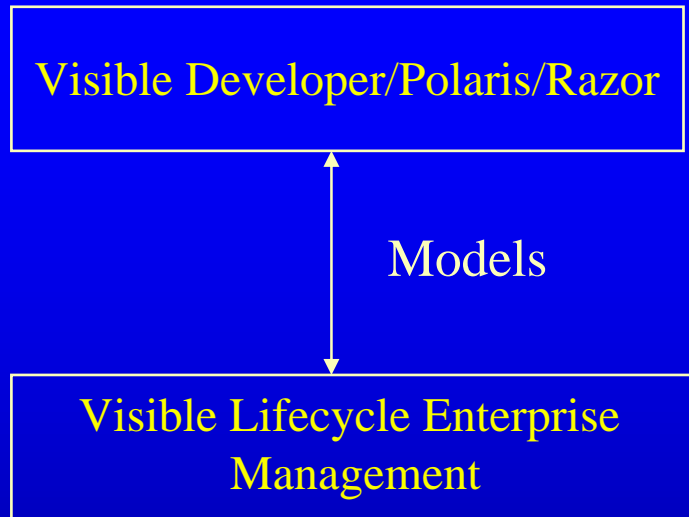
Repository of IT Assets Implementation



- Compliance and Traceability
 - ◆ Object Integration
 - ◆ Application Generation
 - ◆ Task Management
 - ◆ Automated Workflow
 - ◆ Version Control
 - ◆ Release Management
 - ◆ Production Management
 - ◆ Documentation Management

Repository of IT Assets

Cost Effective Deployment



- **Technology for Applications Deployment:**

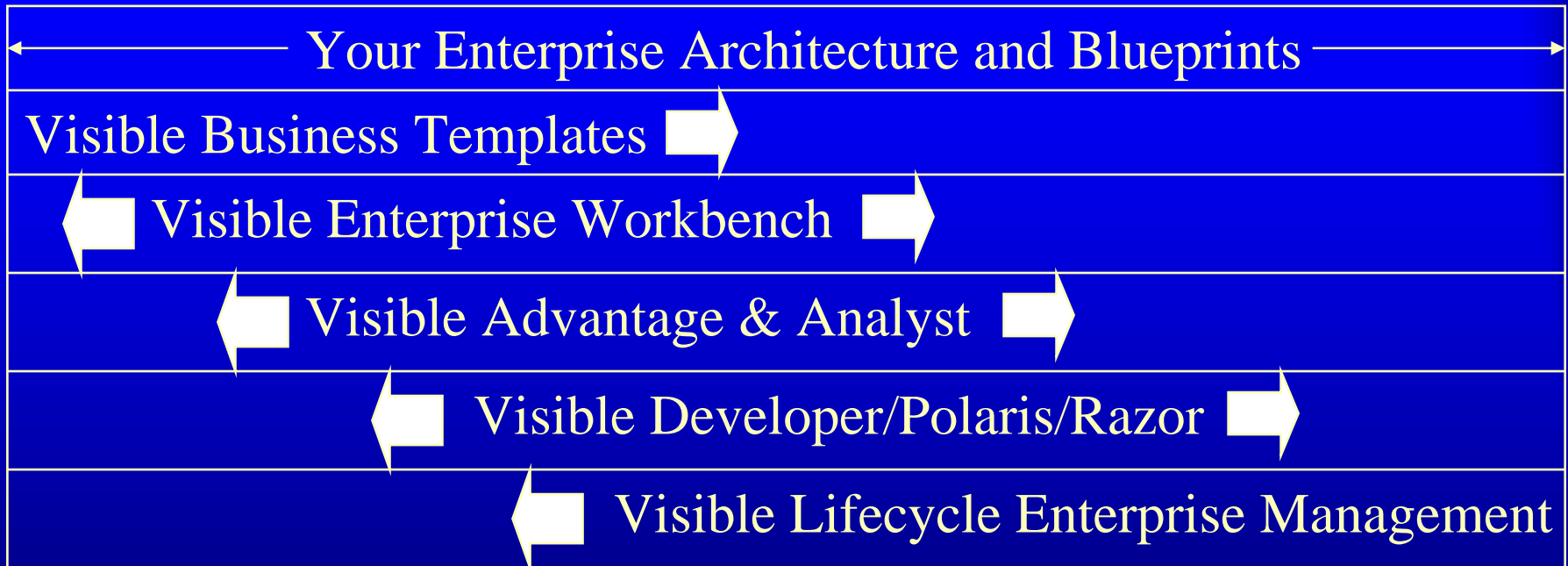
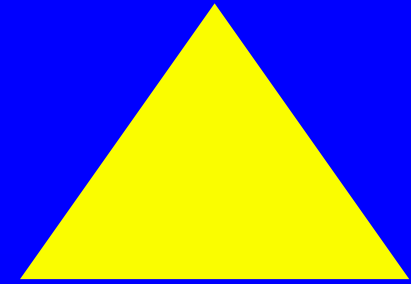
- ◆ Sites and Platforms
- ◆ Databases
- ◆ Applications System
- ◆ Assignments & Authorization

- **Repository Components**

- ◆ Import databases, including Access, SQL Server, DB2 and Oracle.
- ◆ Create business objects by integration of tables for multiple schemas.
- ◆ Generate and run application seamlessly enabling multiple database connections.
- ◆ Visible code patterns for code generation.

Enterprise Architecture Management

Visible Helps You Engineer Your Enterprise
for Excellence and Maximize Productivity



Our products are flexibly implemented individually or as a group.
We cost effectively address applications, problem areas, projects or
a total system redesign.