

Visible Advantage Key Benefits

Automates forward, reverse and reengineering through SQL, ODBC and XML.

Extensible repository supports custom object types.

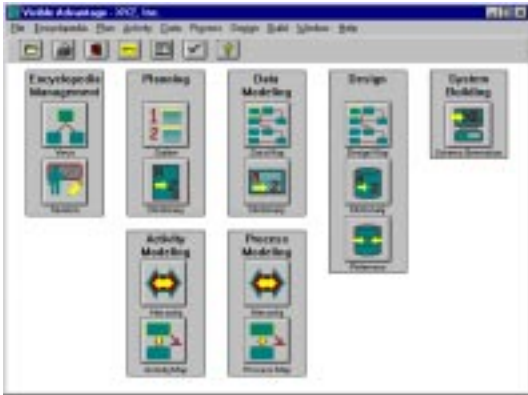
User defined fields allow you to tailor the repository to your specific needs.

Links plans, models, designs, and systems.

Methodology and rule-based central repository ensures cross-model integrity.

Client/Server database repository enables real-time multi-user access.

Cross references current and new systems in an integrated environment.



Main Menu - The Visible Advantage main menu provides a good overview of the product features, including: Encyclopedia Management, Business and Systems Planning, Activity Modeling with Activity Based Costing, Logical Data Modeling, Process Modeling, Database and Application Design, and System Building.

Visible Advantage™ The Enterprise Architecture Toolset with XML

The World's Best Software Engineering Modeling Tool!

Visible Advantage is a full life-cycle, integrated software engineering modeling tool that helps organizations to automate projects that involve business management, strategic business planning, new systems development, existing systems redevelopment, and information systems management. It fully supports all phases of the business planning and systems development life cycles.

In today's competitive environment, organizations must find ways to effect business changes quickly, reengineer work and information systems, implement strategic business plans, and tie business requirements to information systems development. Visible Advantage was designed and developed to help organizations improve business operations and build integrated systems.

Visible Advantage is a software engineering and repository product for complex, cross-functional enterprise class development. It automates all phases of the software development life-cycle and supports business planning, systems development and redevelopment (forward and reverse engineering), systems management, and XML application development. Visible Advantage utilizes a comprehensive organization-wide repository, including the complete documented business model linked to the supported system designs enabling an organization to effect strategic management throughout the organization. Visible Advantage can be used to evaluate the business plan, data model, process model, and system design for quality, completeness, implementability, and consistency, allowing an organization to build, migrate, redesign, and integrate systems. It allows an organization to identify errors and inconsistencies before they become business or systems problems. Visible Advantage is uniquely suited to development of an enterprise information architecture and strategic information warehouse. Visible Advantage is the only integrated modeling tool that allows enterprise needs and measures to be linked directly to a strategic information warehouse data model, enterprise data dictionary, legacy data integration and transformation process models, and the information warehouse database design - all in a single corporate repository.

With almost 20 years of experience in designing tools, improving the Enterprise Engineering methodology, and providing facilitation, training, skill transfer and consulting services, Visible Systems Corporation assists organizations to develop the blueprints of their information models.

Visible Advantage™

Enterprise Information Architecture

Visible Advantage allows you to capture your ultimate Enterprise Information Architecture and map it to your legacy systems, new systems, and your data warehouse(s). This allows you to perform gap analysis to identify items you missed or want to drop, and transition planning from legacy to architected systems.

Software Package Evaluation

The functionality of a commercial application software package can be analyzed and compared with the model of your actual requirements. The degree of support for your individual requirements provided by the software package can then be evaluated as part of a purchase and/or customizing decision.

Full Life-Cycle Support

Visible Advantage automates all of the tasks and techniques of Enterprise Engineering and supports: business, scientific or engineering systems planning and development; new systems development (forward engineering); legacy systems redevelopment (reverse and reengineering, including business reengineering); systems management and infrastructure evolution; system implementation in any language, platform or architecture; and creation of a comprehensive repository for your organization.

Visible Advantage: Tomorrow's Technology Today

Visible Advantage is a powerful software engineering modeling tool. The methodology-based central repository evaluates plans, logical models, and physical designs for consistency and completeness while they are being built. Automatic quality assurance ensures model integrity throughout. Linked plans, models, designs, and systems form networked objects of reusable logic. This approach will allow new systems to be assembled-to-order versus made-to-order.

Visible Advantage establishes a new standard for the state-of-the-art in software engineering technology and offers the functionality and flexibility that can help organizations develop better new systems, regardless of type. This allows customers to leverage legacy systems into the future and accommodate any target technology for implementation. Encyclopedia and model management, business planning, data modeling, process modeling, systems design, implementation, and quality assurance are fully automated across the entire project life cycle.

Visible Advantage automatically draws data and process model diagrams from repository information and automatically keeps them up-to-date. It can derive and automatically generate object-oriented process model logic directly from data models. Multiple physical designs can be captured in one encyclopedia allowing organizations to cross-reference a single logical attribute to the various systems and locations the attribute is implemented in. Model information can be generated in XML.

Visible
SYSTEMS CORPORATION

Call: 1-800-6VISIBLE

Visible Advantage™ The Enterprise Architecture Toolset with XML

Existing Systems Redevelopment

Business rules and logic present in existing systems can be modeled using Visible Advantage. The automated bidirectional migration between database designs and data models provides a unique reverse and reengineering capability that facilitates the improvement, integration or migration of existing systems to architectures such as client/server. Models of existing systems can also be compared with models of new requirements or systems to determine what percentage of an organization's future requirements will be satisfied by existing systems.

Model Management

Visible Advantage has been developed with integrated model management features inside the tool to coordinate work and integrate results. Visible Advantage is used as a project team tool to build comprehensive, integrated systems and manage operations. The creation of model views, project security, "yellow sticky" model notes, session documentation, and data dependency cluster analysis enable teams to facilitate cooperative team development and to model independently implemented subsystems. This enables multiple project teams to develop large systems concurrently.

Visible Advantage is also the only modeling tool that allows multiple physical (de-normalized) database designs to be created from and/or linked to subsets of a single logical (fully-normalized) enterprise data model in which every element is linked to strategic, business, and system requirements. This facilitates both enterprise information architecture development and strategically-driven, customer-focused, information-centric, model-based, software component engineering.

Activity Modeling/Activity Based Costing

This allows you to capture the Activities your enterprise performs and to define relationships among the activities, breaking them down in increasing detail for both the as-is and to-be Activity Models. The industry standard IDEF0 modeling syntax is used. This capability also supports Activity Based Costing, allocating activity costs to different cost centers and computing total cost for the activity.

Business Process Reengineering

Visible Advantage can be used effectively as a strategic planning tool to produce superior, multilevel, strategic plans. In addition, Visible Advantage can be used to document an enterprise's performance measures and link them to appropriate strategic plan elements. This linkage allows quick reaction to changes in environment, policy, or customer requirements. More importantly, using Visible Advantage, the information requirements that support an enterprise's performance measures can be modeled and translated into database, data warehouse/datamart designs, and designs for corporate portals using XML constructs. These designs can be implemented, assuring that an enterprise's information systems meet its information needs and ensures implementation of the business vision, goals and objectives.

Visible Advantage's business planning features allows organizations to see how business models and the developed system supports the goals, strategies, and objectives of the enterprise. Sequential and parallel business processes can be modeled, analyzed and reengineered. Process improvements in work and information systems can then be implemented.

Data and Process Administration

Visible Advantage supports advanced data and process normalization. Data administrators can use Visible Advantage for dynamic management of the organization's data and metadata, reducing redundancy and increasing standardization across all of the organizations information system's.

Modeling, Schema Generation and XML Constructs

A key feature of Visible Advantage is its ability to capture a logical data model and multiple physical designs (different in both structure and DBMS) cross referenced in the same encyclopedia. In addition, Visible Advantage can generate process models from the information captured in the data models. Process models also uniquely support depicting parallel activities.

Visible Advantage utilizes a scripting language to specify how schemas and XML constructs will be generated, allowing the software to export in virtually any text-based format. The schema generation can be customized for any SQL, or XML dialect.

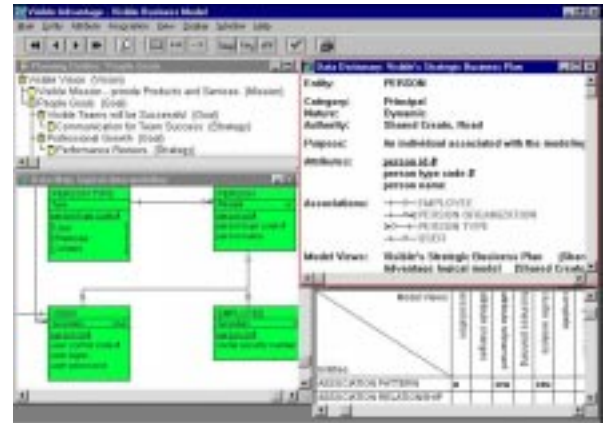
Deliverable and Report Generator

The report generation capability allows an organization to create project deliverables and presentation-quality reports. Visible Advantage maintains a full text record of all model characteristics, allowing completely customized reports. Visible Advantage can also display and print data maps in Information Engineering symbology or IDEF1X format. These features allow the US Department of Defense, contractors, and companies to use the rigorous modeling techniques of IE to produce IDEF format output for DoD reporting purposes.

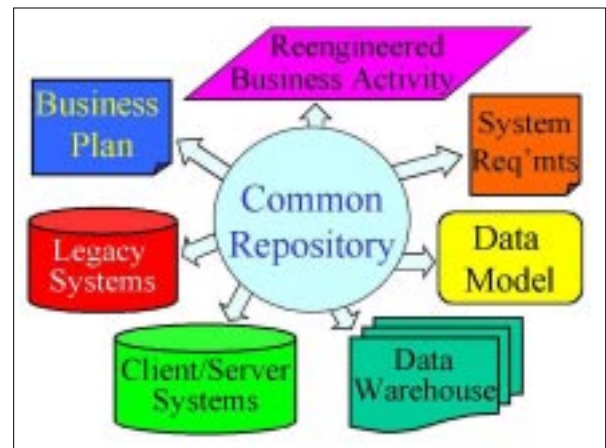
System Requirements Visible Advantage requires a minimum Intel 80486 processor and Microsoft Windows 3.1 (or later) with at least 8MB RAM. Windows 95, 98, 2000 or NT 4.0 requires a minimum of 16MB RAM. At least 50MB of available hard disk storage space is recommended.

Advanced User Interface

Multiple windows can be synchronized and opened concurrently with changes processed automatically throughout all open dialogs, even across the network. Active matrices (see bottom right of screen below for a CRUD matrix example) save data entry time while providing a way to view the links between plans, data, processes, designs, and systems



Business Model - Cross-linking of objects such as the business plans and data models is quick and easy. Information may be viewed and edited in the planning outline, graphical data map, and textual data dictionary, or the cross-references and links may be edited in the matrices. Independent, cross linked physical database designs are depicted graphically or textually similar to the logical data model, but with the capability to add objects that are compatible with your particular DBMS.



Requirements Traceability and Model Linking - Link your Business Plans and Systems requirements to your data model and database designs. Identify which system components support your reengineered business activities and which support your as-is process. Design and build new data warehouses and map them to source systems, then map those source systems to identify what components of your business plan are currently supported and which still need support.

Pricing: Contact our sales department
sales@visible.com

Call: 1-800-6VISIBLE

Visible
SYSTEMS CORPORATION

201 Spring Street • Lexington, MA 02421
(800) 6VISIBLE • Fa x (781) 778-0208
Email: sales@visible.com • www.visible.com